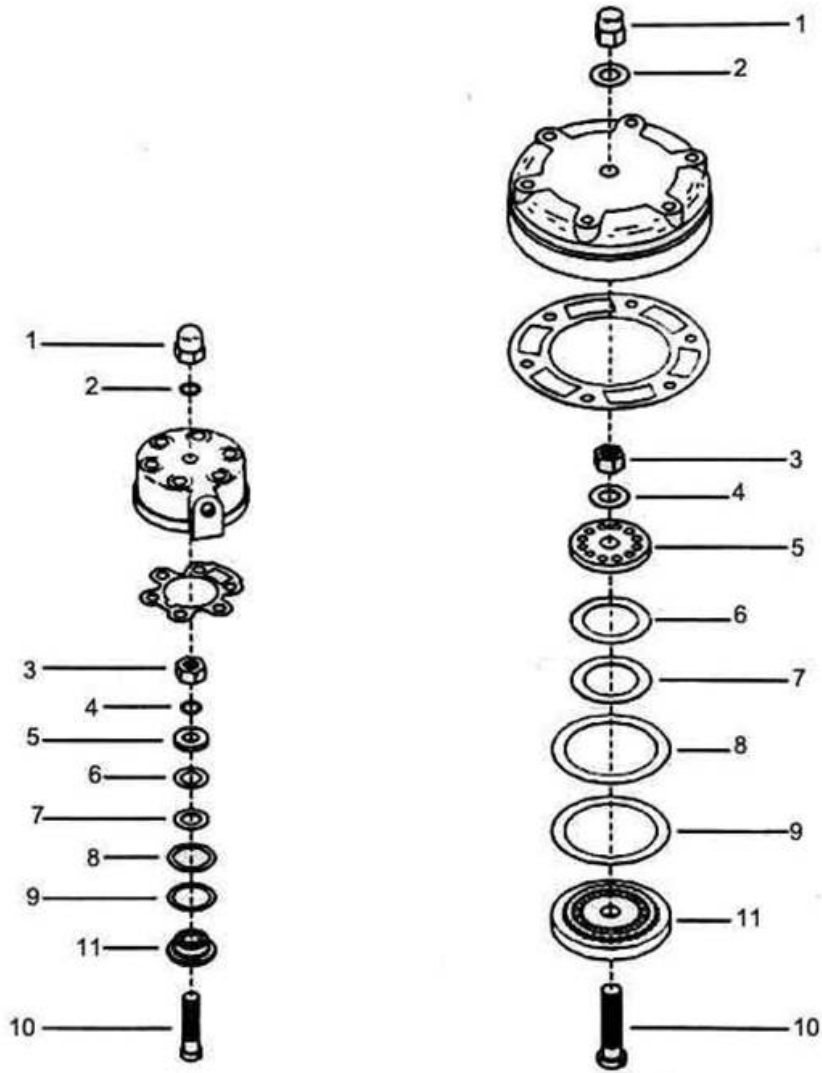


## 4. 20 GA & 50 GA Concentric Ring Valve Assembly Model 7T2



All manufacturer's names, numbers, photos, product description and/or part numbers are used for reference purposes only & it is not implied that any part listed is the product of these manufacturers. Since Approvement are made from time to time, the illustration and specifications are subject to change without notice.

## 4. 20 GA & 50 GA Concentric Ring Valve Assembly Model 7T2



Ref. No.	Component Part Number	Description	Qty. per Assly.	Spares		
				1	2	3
4-00A	31517725	Air Valve Assembly 2"	1			
4-01A	30287643	Nut Hex Acron 5/8 - UNF	1			
4-02A	37092913	Washer Belleville 5/8"	1			
4-03A	95076808	Nut Hex Lock 5/8"	1			
4-04A	37092913	Washer Belleville 5/8	1			
4-05A	30218945	Stop Plate (IN/DIS)	1			
4-06A	30221584	Spring Valve (IN/DIS)	1	1	1	2
4-07A	30215925	Plate Valve (IN/DIS)	1	1	1	2
4-08A	30215834	Plate Valve Inlet	1	1	1	2
4-09A	30221493	Spring Valve (IN/DIS) 15/8"	1	1	1	2
4-10A	30220941	Bolt Valve 1-5/8"	1			
4-11A	30217657	Seat Valve (IN/DIS) 1-5/8"	1			

Ref. No.	Component Part Number	Description	Qty. per Assly.	Spares		
				1	2	3
4-01B	37004843	Valve Assembly Size 50	1			
4-01B	30287650	Nut Hex Acron 3/4 - UNF	1			
4-02B	37092897	Washer Belleville 3/4	1			
4-03B	95076816	Nut Hex Lock 3/4"	1			
4-04B	37092897	Washer Belleville 3/4"	1			
4-05B	30218978	Stop Plate (IN/DIS)	1			
4-06B	30221501	Spring Valve (IN/DIS)	1	1	1	2
4-07B	30181499	Plate Valve (IN/DIS)	1	1	1	2
4-08B	30215891	Plate Valve Inlet	1	1	1	2
4-09B	30221550	Spring Valve (IN/DIS) 15/8"	1	1	1	2
4-10B	30279897	Bolt Valve 5"	1			
4-11B	30229538	Seat Valve (IN/DIS) 5"	1			

All manufacturer's names, numbers, photos, product description and/or part numbers are used for reference purposes only & it is not implied that any part listed is the product of these manufacturers. Since Approvement are made from time to time, the illustration and specifications are subject to change without notice.